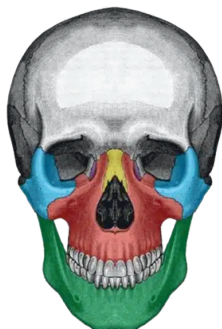


Le Fort Fracture



- Zygomatic
- Maxilla
- Nasal
- Lacrimal
- Mandible

LE FORT FRACTURE

DEFINITIONS

Le Fort Type I Floating Palate



Le Fort I

Horizontal maxillary fracture, separating the teeth from the upper face.

Fracture line passes through the alveolar ridge, lateral nose, and inferior wall of the maxillary sinus.

Le Fort Type II Floating Maxilla



Le Fort II

Pyramidal fracture, with the teeth at the pyramid base, and nasofrontal suture at its apex.

Fracture arch passes through the posterior alveolar ridge, lateral walls of maxillary sinuses, inferior orbital rim, and nasal bones.

Le Fort Type III Floating Face Craniofacial disjunction



Le Fort III

Traverse fracture line passes through nasofrontal suture, maxilla-frontal suture, orbital wall, and zygomatic arch/zygomaticofrontal suture.



Optimized Trauma
Registry Staffing



Performance
Improvement Support



Data Validation &
IRR Accuracy



Program
Assessment &
Gap Analysis



Check out our website to
learn more!

